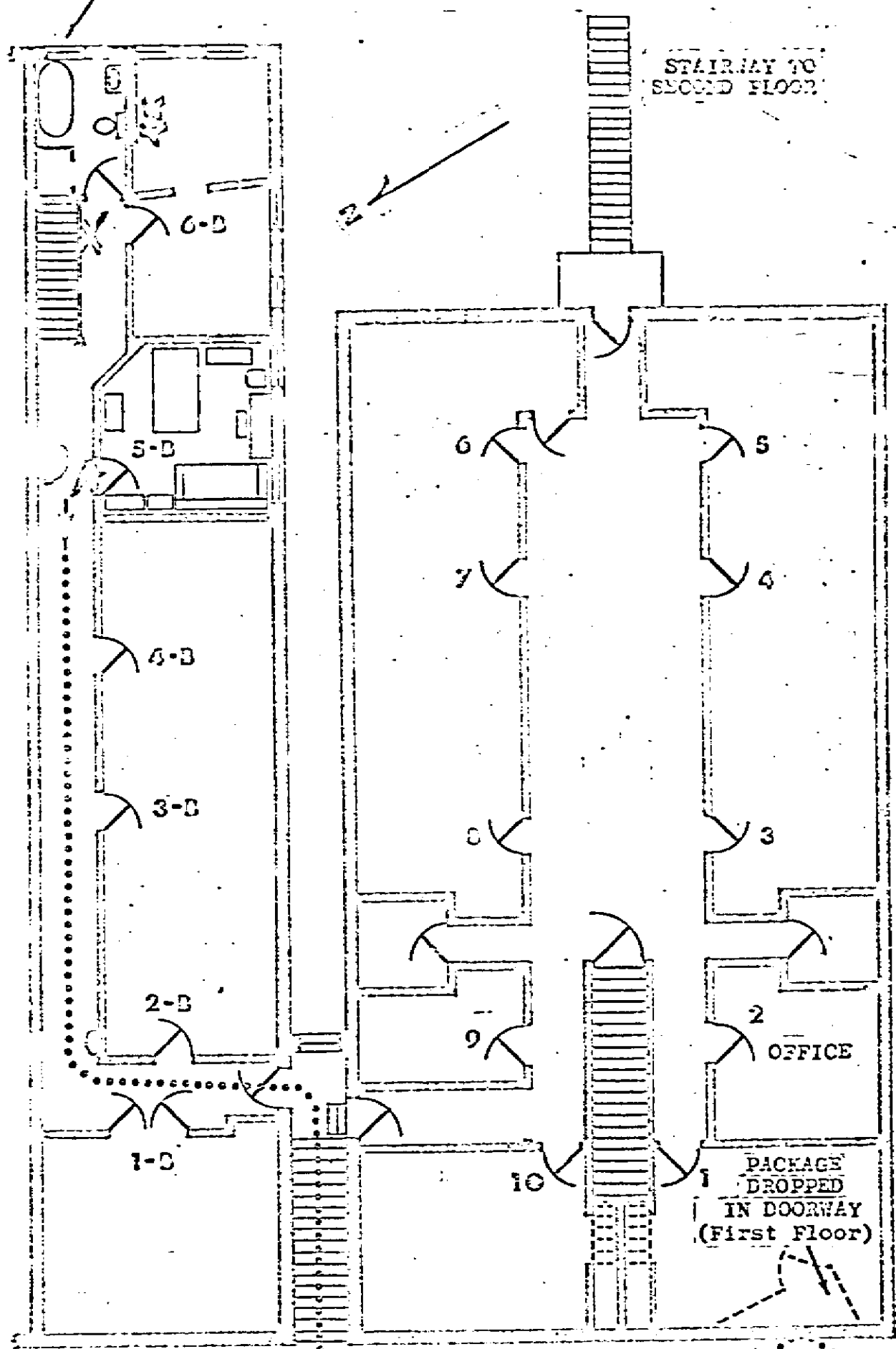


SECOND FLOOR PLAN of ROOMING HOUSE

BATHROOM WINDOW
F ON WHERE
SHOT WAS FIRED



418-420

422

422 1/2

424

NORTH ENTRANCE
(stairway)
TO ROOMING HOUSE

SOUTH ENTRANCE
(stairway)
TO ROOMING HOUSE

[S. MAIN ST.] *Charles R. ...*